


2018

ARCHITECTURE  
**PORTFOLIO**

Francisco Farrera





**Contents**

**ACADEMIC**

Graduate Thesis - CELEBRATE DIVERSITY 2018

Lafayette 2040 Urban Master Plan - Graduate Studio II 2018

ASCEND - 2018 ACSA National Competition 2018

Fitzgerald Celebration Park - Adaptive Re-use 2017

Jefferson Tower - 3rd Year Undergraduate Studio 2016

MODESTEhouse - Design-Build 2017

IMID - 2017 ACSA Steel Competition 2017

**PROFESSIONAL**

Tiny Home Design 2017

Construction Documents for ARCH&also 2017

A large stack of books is shown, with the word "ACADEMIC" overlaid in a large, bold, grey font. The books are stacked in a way that creates a sense of depth and volume, with the spines of the books visible. The word "ACADEMIC" is centered horizontally and partially overlaps the books. The background is a light, neutral color, and the overall image has a clean, professional appearance.

ACADEMIC

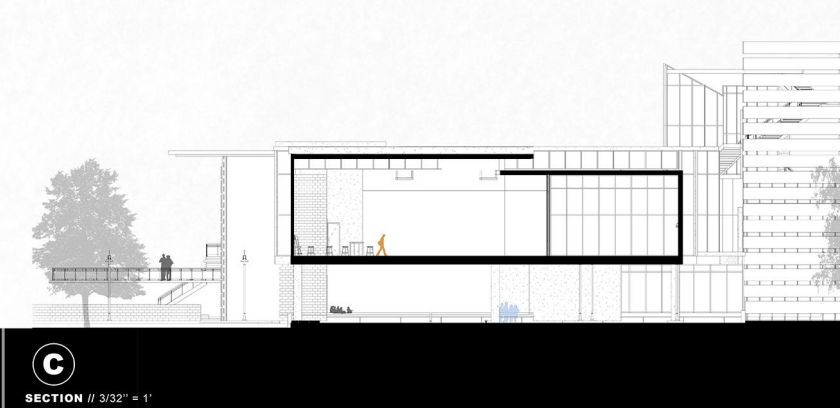
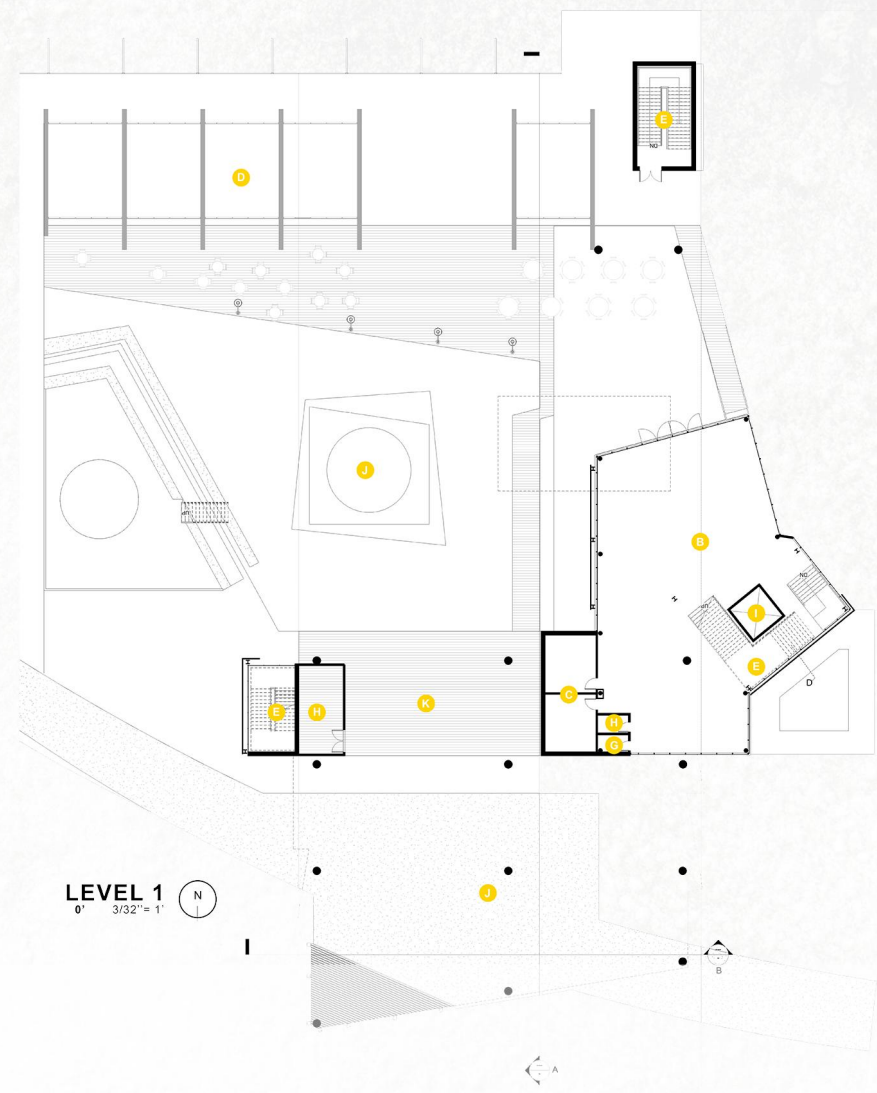
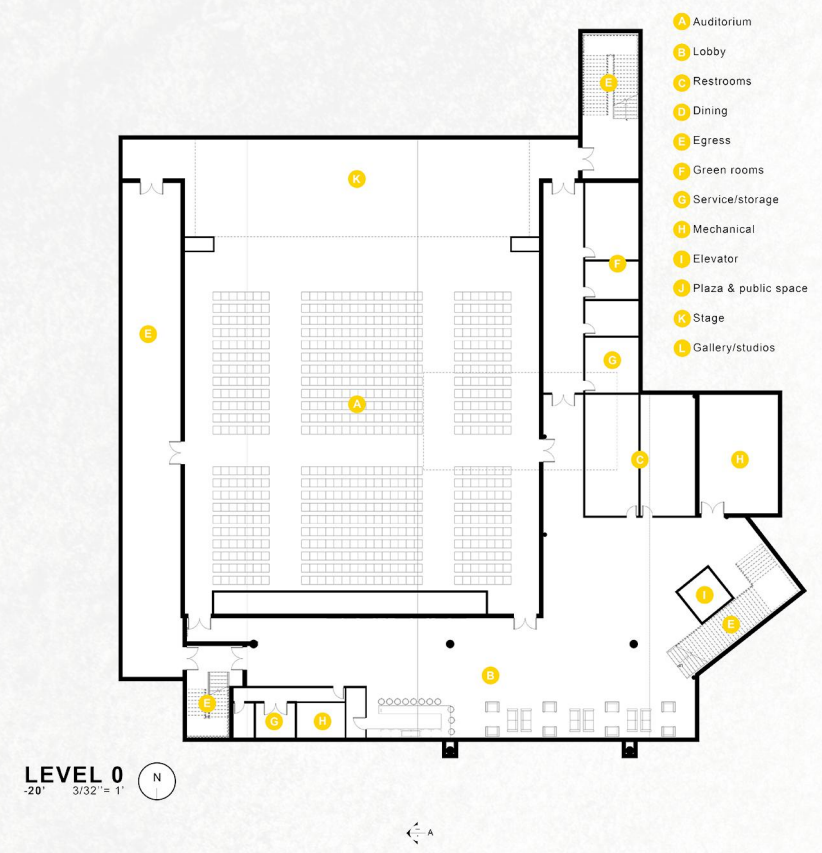
A proposal to mitigate gentrification, discrimination and separation within urban fabrics through an architecture of music, visual art and food  
PILOT SITE: AUSTIN, TX

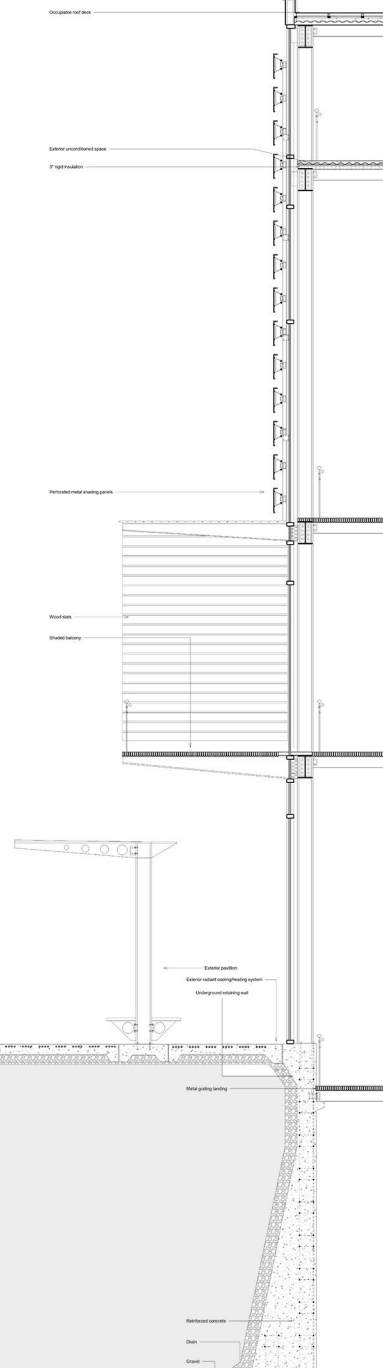
A new typology for the most diverse cities in the world



# CULTURAL DIVERSITY

CELEBRATING HUMANITY IN ARCHITECTURE



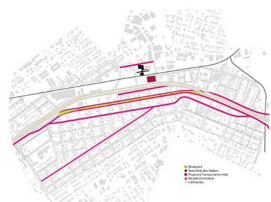




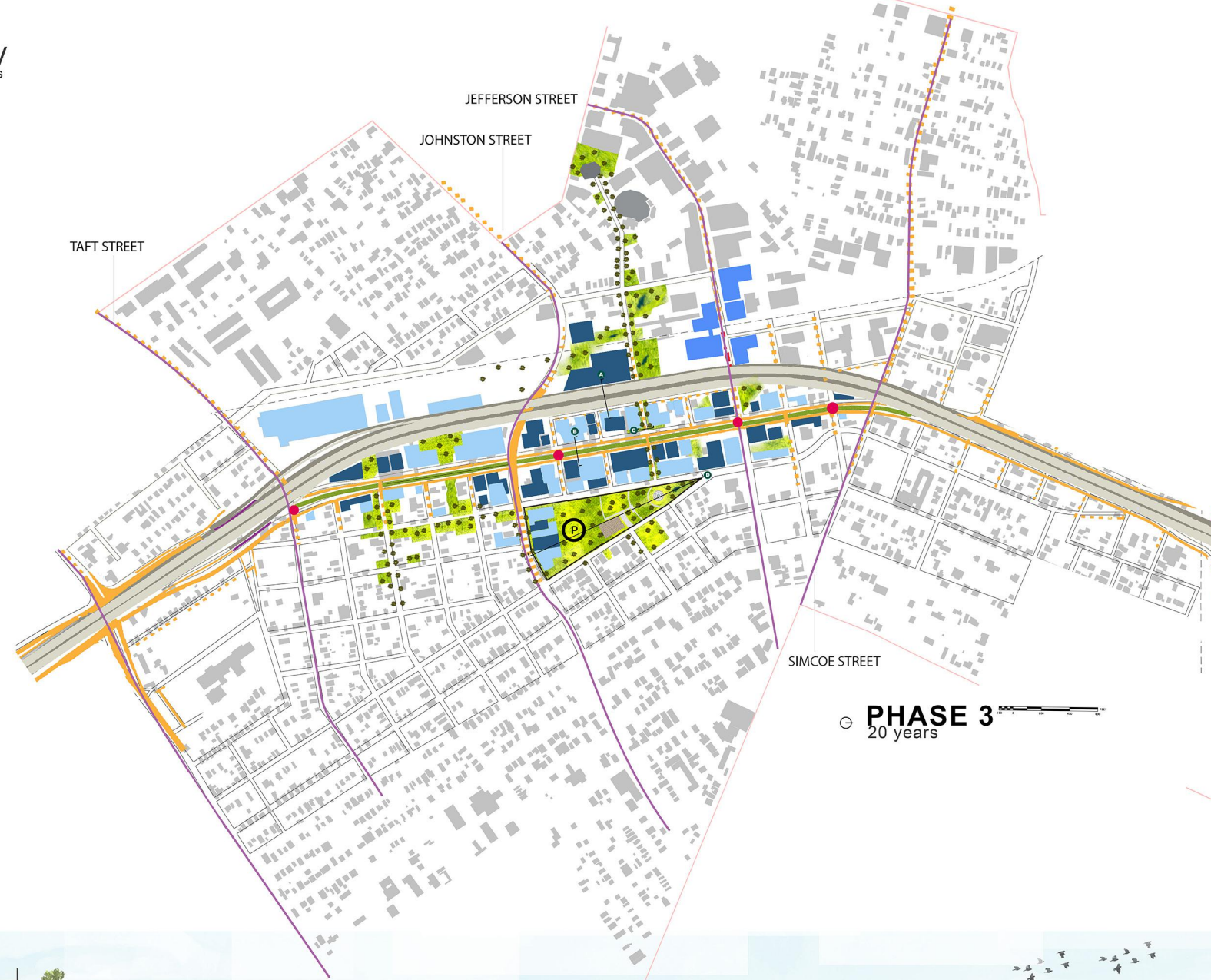
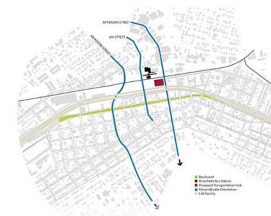
# Intensify & Diversify through density and destinations



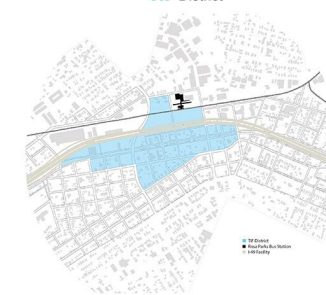
Parallel Circulation



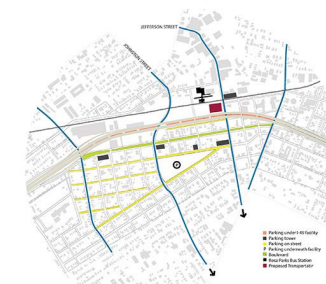
Perpendicular Circulation



TIF District



Parking



Walking Distance Schemes



Green & Public Space



# Lafayette, LA 2040 Urban Master Plan

Lafayette LA  
**2040**  
Urban Master Plan





Over 45,000 miles of infrastructure make up the **national highway system**. Technology has allowed this infrastructure to be **elevated**, in order for it to intersect dense urban environments. However, this leaves a wasteful amount of vertical dead space, which conveniently sits over an existing **powerful structure**. This suggests a poetic solution to **homelessness**, which is a problem evident in most urban cities; especially under their freeway facilities. The proposal is to use architecture to elevate those in need, helping them **ASCEND** and return to a **humane**, healthy lifestyle. According to the American Association to End Homelessness, a lack of affordable housing is undeniably the main cause for homelessness today (2017). More alarming than the 600,000 people who are homeless today is the 11 million that are at substantial risk of falling into this category.



# ASCEND ASCEND

HEALTHY + AFFORDABLE + HUMANE HOUSING *to eradicate homelessness*

### urban elevated freeways

Over 45,000 miles of infrastructure make up the national highway system. Technology has allowed this infrastructure to be **elevated**, in order for it to intersect dense urban environments. However, this leaves a wasteful amount of vertical dead space, which conveniently sits over an existing powerful structure. This suggests a poetic **solution to homelessness**, which is a problem evident in most urban cities; especially under their freeway facilities. The proposal is to use architecture to elevate those in need, helping them **ascend** and return to a humane, **healthy** lifestyle.

### dense, urban environments

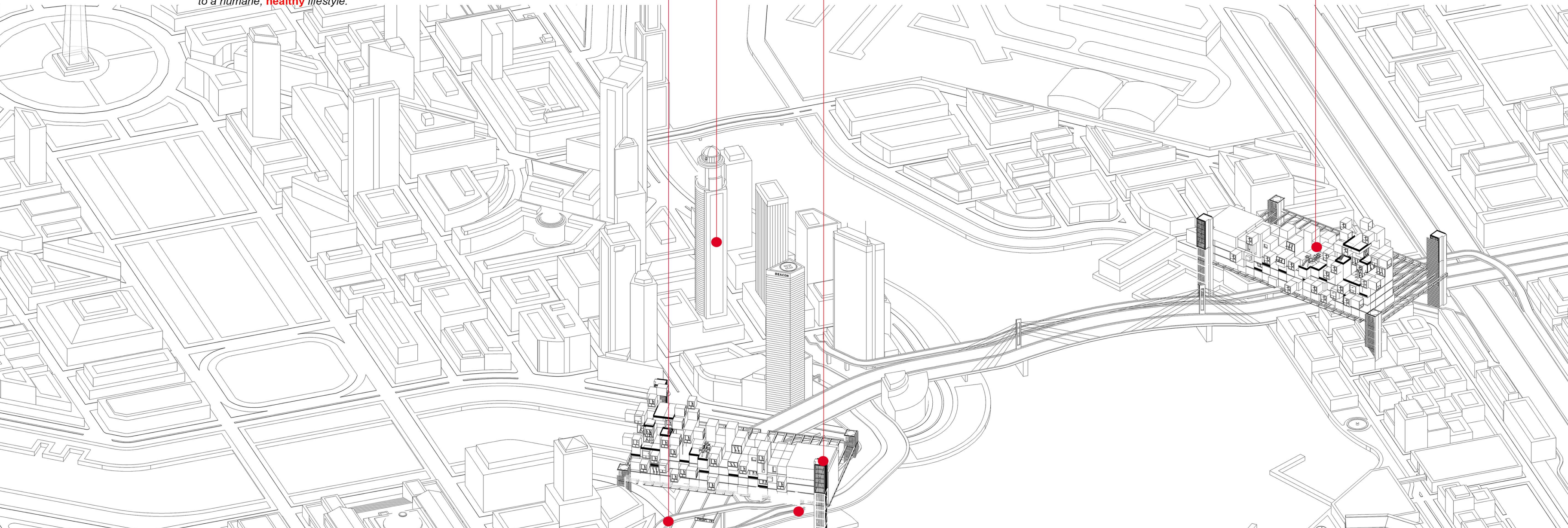
Homelessness is highly present in **metropolitan** areas. According to the American Association to end Homelessness, this is mainly due to a lack of truly, **affordable housing**.

### adjacent to exits

To maximize exposure, traffic and activity, the interventions will optimally happen adjacent, or in close proximity of a freeway exit.

### subsidized housing

Businesses proposed at the groundlevel are encouraged to employ upstairs' residents. Grocery stores, restaurants and shops all benefit from the residential population above, and therefore, can afford to pay for the prime real state, making housing highly affordable and healthy.

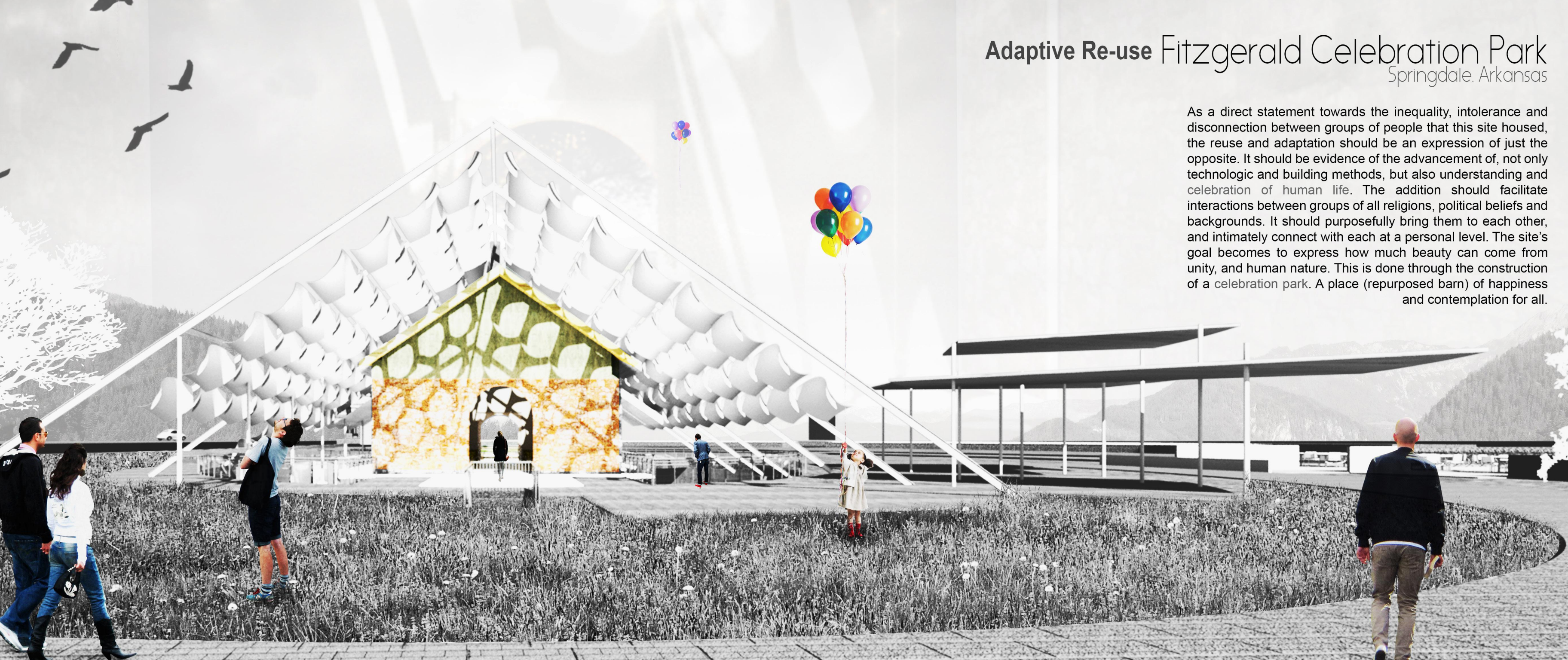


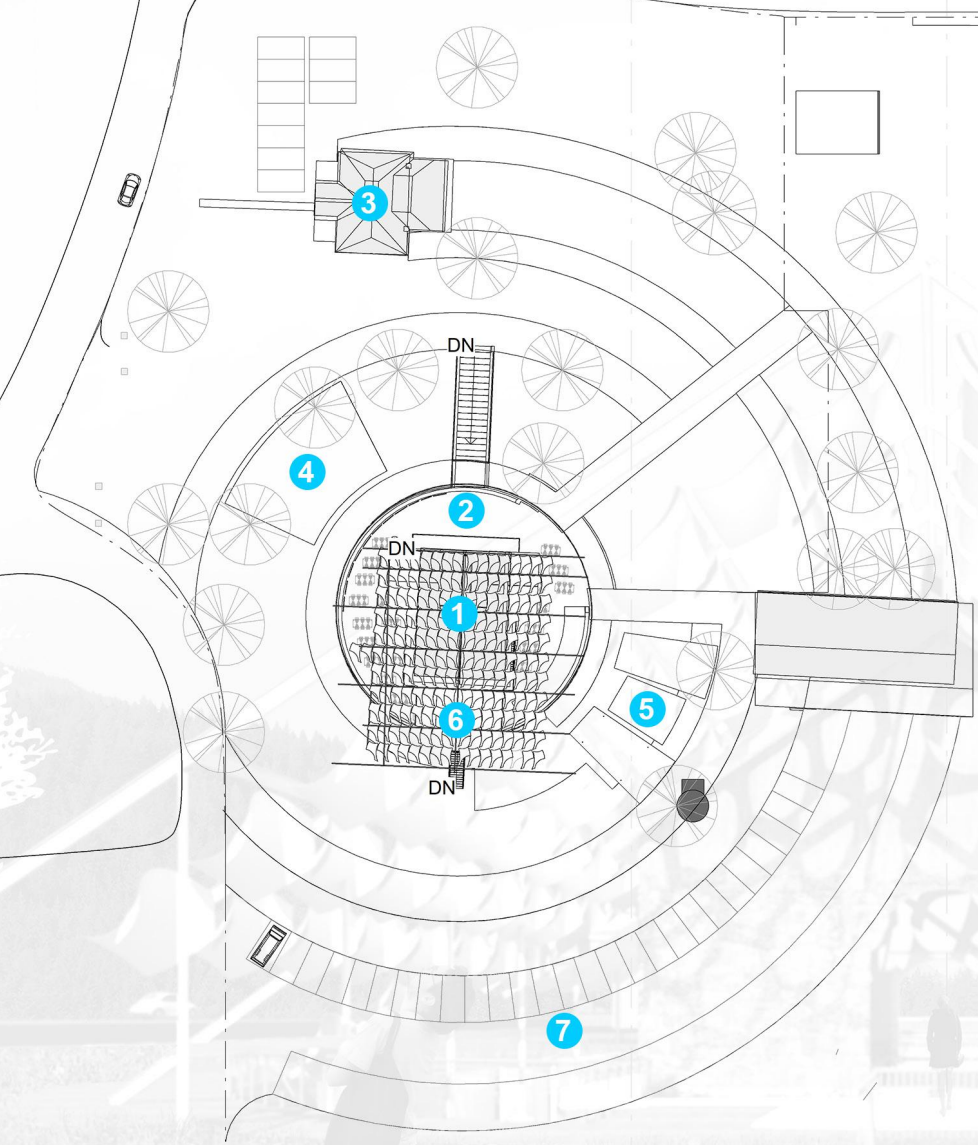


# Adaptive Re-use Fitzgerald Celebration Park

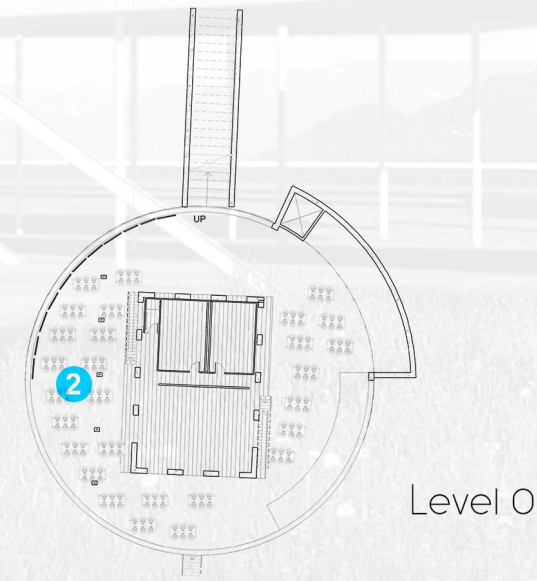
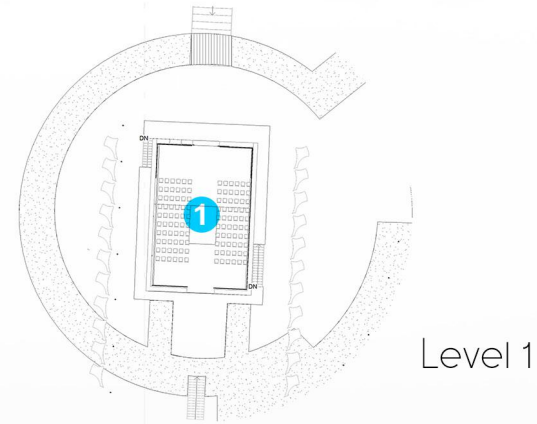
Springdale, Arkansas

As a direct statement towards the inequality, intolerance and disconnection between groups of people that this site housed, the reuse and adaptation should be an expression of just the opposite. It should be evidence of the advancement of, not only technologic and building methods, but also understanding and celebration of human life. The addition should facilitate interactions between groups of all religions, political beliefs and backgrounds. It should purposefully bring them to each other, and intimately connect with each at a personal level. The site's goal becomes to express how much beauty can come from unity, and human nature. This is done through the construction of a celebration park. A place (repurposed barn) of happiness and contemplation for all.





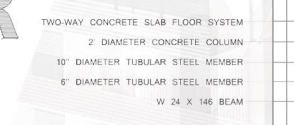
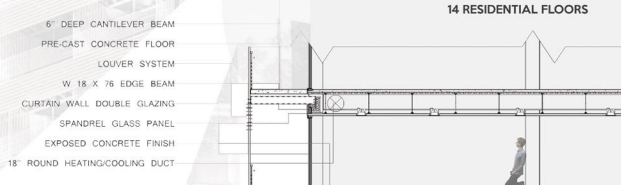
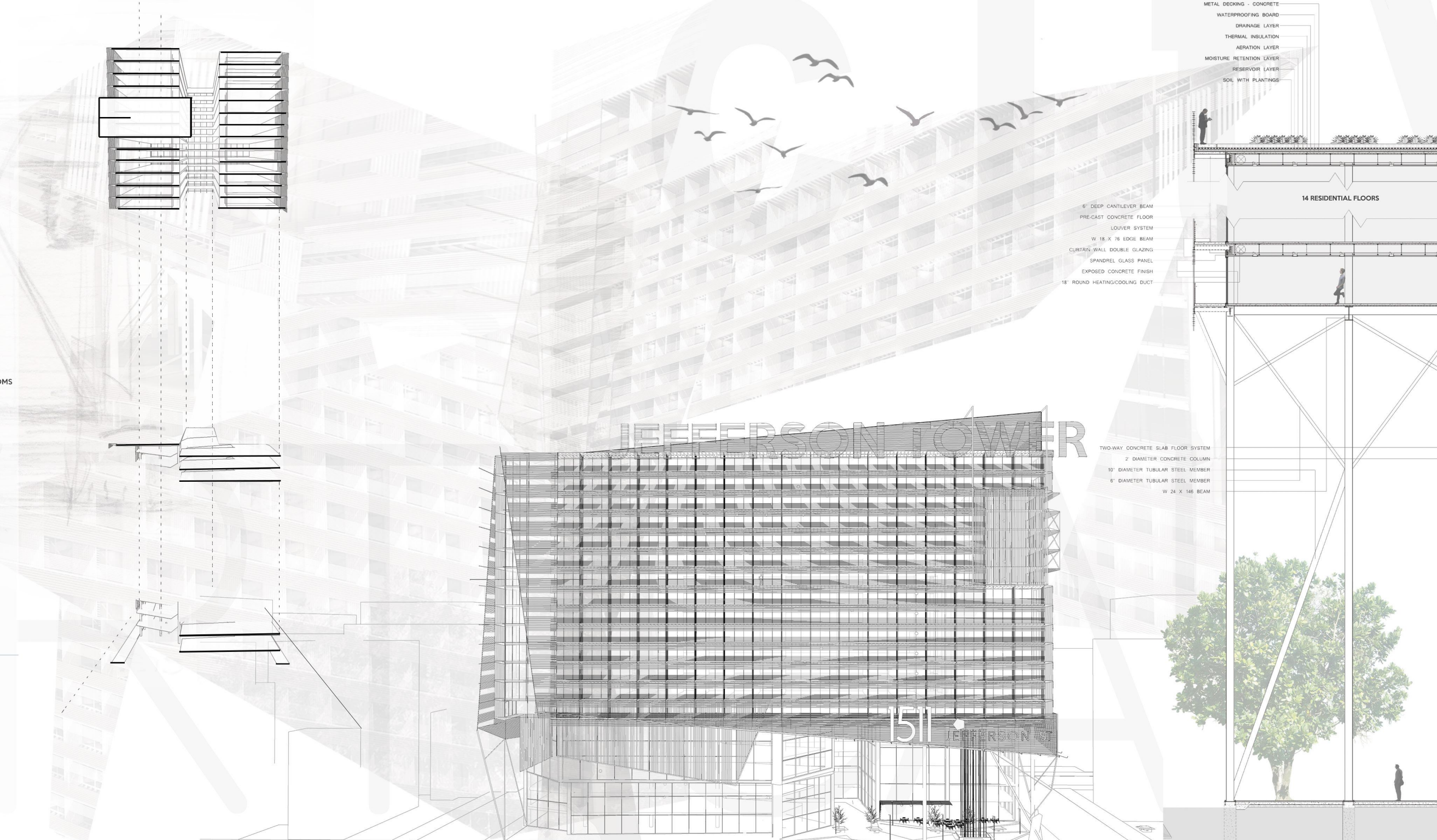
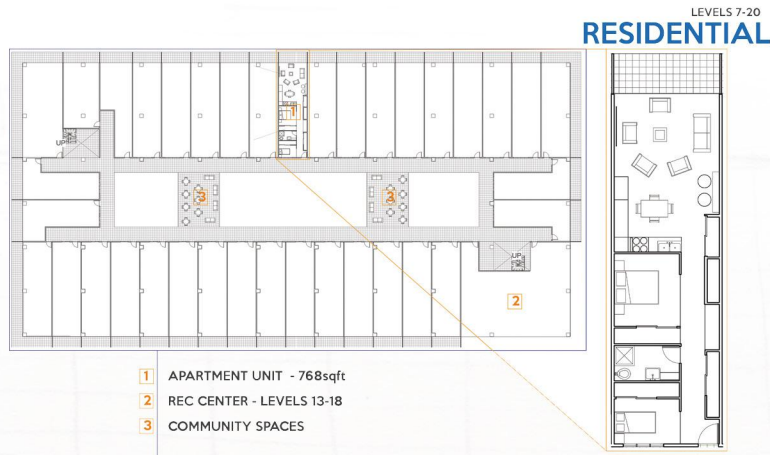
- 1 Interior event space (former barn, 1850)
- 2 Dining reception space - Level 0
- 3 Renovated hotel (former historic home, 1860)
- 4 Water collecting pond
- 5 Outdoor pavillion
- 6 Operable fabric shading system
- 7 Parking for 120 vehicles



Existing Conditions







# Modeste house Design-build

The MODESTEhouse is a tiny home, approximately 200-square-feet in size, built on an 8-foot by 20-foot flatbed trailer. A study in new modular construction techniques, this student design-build project put into question the notion and currently-trendy idea of tiny houses.

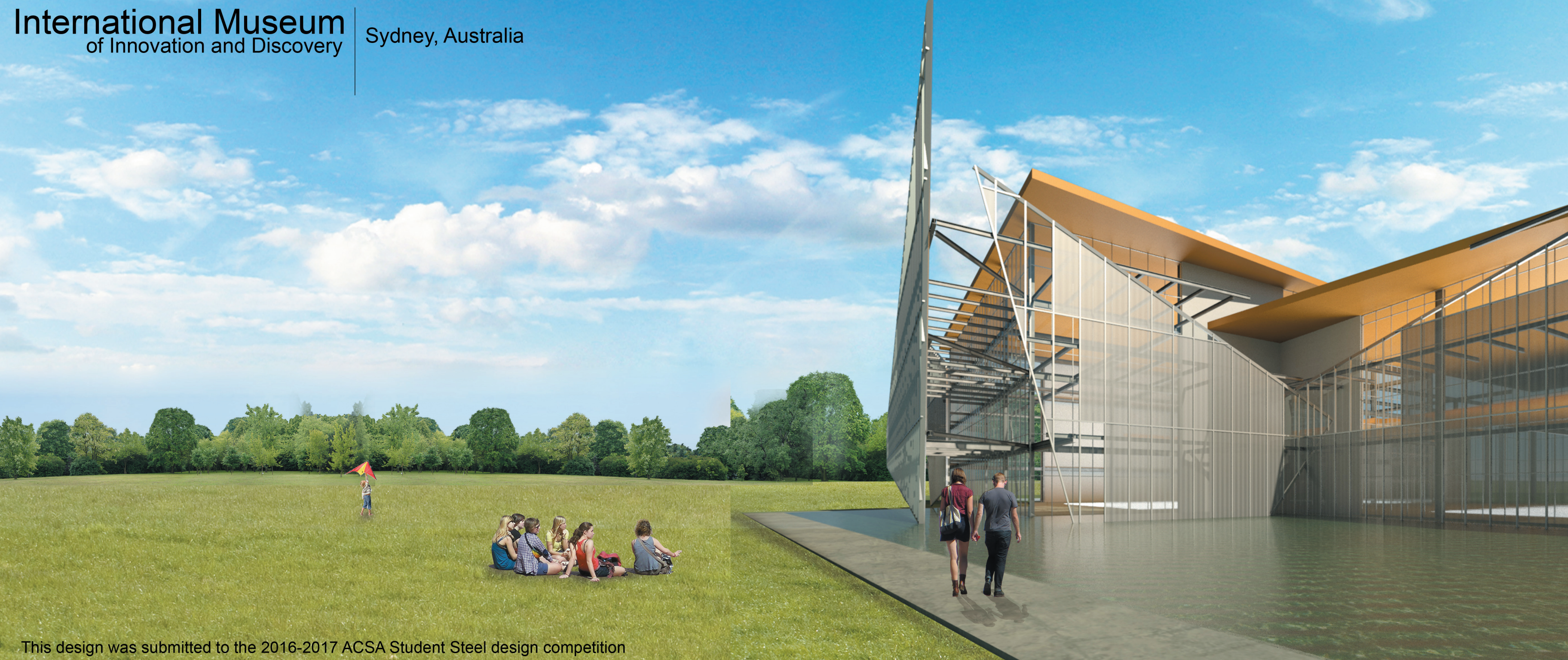
This innovative tiny home features a structural system similar to boat construction to make it extremely light and strong. Also the north wall is completely glazed with NASA-designed insulative polycarbonate and has continuous storage shelving. In addition the home has a covered porch, corrugated metal and cypress siding, solar panels, and energy efficient heating and air-conditioning.





# International Museum of Innovation and Discovery

Sydney, Australia



This design was submitted to the 2016-2017 ACSA Student Steel design competition



## Galleries

### 1 Pre-Digital

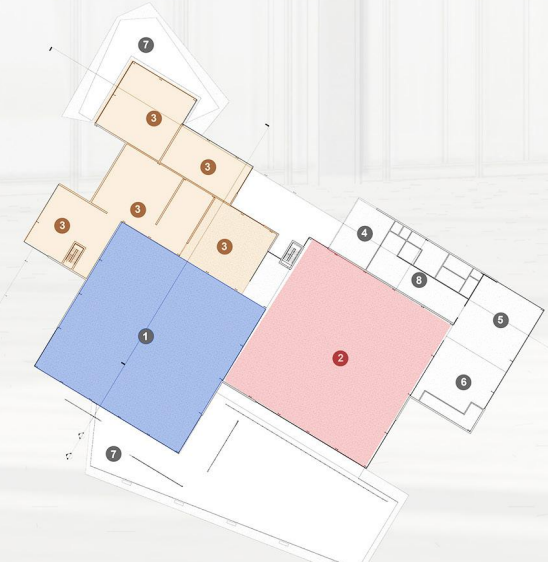
The pre-digital gallery is permanent, and intended to be the first one seen by visitors, as they begin their walk through the first path. It will have expositions of the major discoveries and innovations that took place in the era of analog science

### 3 Unknown

The future galleries will be changing throughout the year, and at the end of the first path visitors will go through. It will expose experimental, groundbreaking research and breakthroughs that are anticipated to revolutionize the future.

### 2 Digital

The present gallery is semi-permanent, and it will feature the most influential and innovative science accomplishments of the digitalized world. It is also considered the main event in the sequence of spaces in the museum.



# PROFESSIONAL



# The Francisco

tiny home design



Independent tiny home schematic design  
for Tee Tiny Houses of Arnaudville, LA



# FARMhouse

# ARCH&also, llc

Construction documents - Revit  
All design credit goes to ARCH&also, LLC.

